

ICEFJORD CENTRE ILULISSAT GREENLAND

PREQUALIFICATION RESTRICTED DESIGN COMPETITION ARCHITECT and LANDSCAPE ARCHITECT

ABOUT THE COMPETITION

COMPETITION PROMOTERS

The GOVERNMENT OF GREENLAND, QAASUITSUP MUNICIPALITY and REALDANIA hereby invite interested parties to submit applications to prequalify for participation in an international competition for the design of a new icefjord centre at Ilulissat on the west coast of Greenland. The centre is to accommodate the large number of visitors who each year come to see the icefjord and its unique natural surroundings.

The competition is a design competition that may be followed by a negotiated procedure. The competition promoters intend to select two or three winners of the design competition and to invite them to participate in a negotiated procedure.

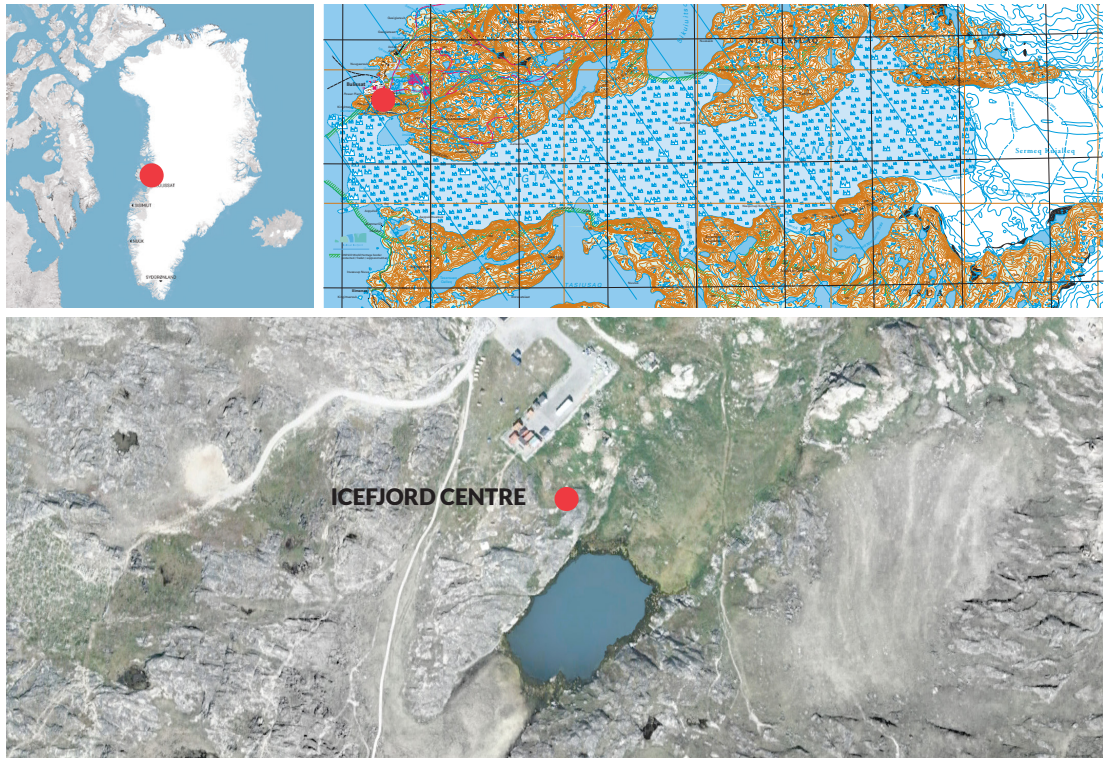
The contracting authority has preselected three teams for participation in the competition and will subsequently select up to three additional teams on the basis of this prequalification round. This invitation is open to architects collaborating with landscape architects. Once the architectural consultants have been selected, they will have to select their engineering consultants. The selection of an exhibition designer is not part of this invitation to tender.

THE ASSIGNMENT

Ilulissat Icefjord is located on Disko Bay on the west coast of Greenland, 250 km north of the Arctic Circle. The icefjord is an area of outstanding natural beauty where visitors can see one of the world's most active calving glaciers at close quarters, and where global climate change is spectacularly evident right in front of their eyes.

In 2004 the icefjord at Ilulissat was placed on the UNESCO World Heritage List because of the area's unique natural scenery and outstanding glaciological features.

This unique place in the magnificent Greenland landscape attracts great attention and interest from people all over the world, and the Government of Greenland keenly wishes to be able to protect the site while at the same time presenting it to visitors.



The future icefjord centre is to be a local and international meeting place for tourists, climate researchers, debaters and official guests from all over the world. The new centre will be a gathering point for political debate on global climate change and a destination for tourists who are attracted to the dramatic and distinctive icefjord scenery. The centre will also focus on Greenland and the cultural history of its people. People have lived in harmony with the icefjord for 4400 years, and fishing and hunting remain important activities in the area.

The design competition concerns building design and landscaping but not the actual exhibition design of the icefjord centre.

The new centre is to be located between the town of Ilulissat and the icefjord. It is to have a gross floor area of about 800 sqm, and the ambition is to build a centre that is as sustainable as possible given the latitude of the site.

Competition entries are to take into account in particular that transporting building materials to Ilulissat poses a challenge because of climate conditions, the size of shipping containers, the transport times involved and the cost of delivery from various continents.

PREINVITED TEAMS

The competition promoters have preinvited three teams of architects and landscape architects to participate in the competition:

Team: KENGO KUMA AND ASSOCIATES

Team: RINTALA EGGERTSSON ARCHITECTS

Team: STUDIO OTHER SPACES / Olafur Eliasson and Sebastian Behmann

ABOUT THE COMPETITION

DEADLINE FOR RECEIPT OF APPLICATIONS: TUESDAY 1 SEPTEMBER 2015, 4 PM

Two hard copies of the prequalification application are to be submitted in either Danish or English. References may, however, also be in Norwegian or Swedish. In addition, a digital version of the complete application (low-resolution PDF format) stored on a USB memory stick is to be delivered to the following address:

Arkitektkonkurrencerdk ApS
Hyldegårdsvej 7, 2920 Charlottenlund, Denmark.
Att: Anne-Mette Bølling, managing director.
The material submitted must be marked 'Ilulissat – Visitor centre'.

APPLICATION MATERIAL

From among the applicants who meet the criteria set out in this prequalification invitation and are deemed able to perform the services required, the contracting authority will select the three teams of architects that are assessed as having the skills and competencies that are most appropriate to the assignment and have presented the most relevant references.

1. Organisation

The following information is to be submitted for all companies in the applicant's team:

1. Contact information for the applicant: Company name, address, company registration number, telephone number, mobile phone number, email address, name of contact person and website address.
2. Key financial figures for the past three financial years: revenue, equity, profit and number of employees. These figures must be certified by an auditor.

The following information is only to be provided by the lead consultant (in the case of shared consultancy by all members of the team):

3. Liability insurance: Details of professional liability insurance with a minimum cover of EUR 1.5 million.

2. References

4. Each applicant team may submit a maximum of 15 references in total. The reference projects should preferably be buildings erected in the Arctic area or buildings of the same scale and complexity as the visitor centre that is the subject of this invitation. Likewise, the team should preferably have general skills in designing for Arctic conditions. The reference projects must have been realised within the past ten years.

Each reference must include the following information:

- a) The name of the client
- b) The name, scope and year of construction of the building project
- c) The applicant's role in the project

No reference may take up more than two A4 pages in total.

The competition promoter welcomes international participants, but all applicants should note that all Danish norms and standards will apply and that the working languages will be Danish and English.

SELECTION CRITERIA

Based on an assessment of the applicants' technical capacities (ie capacities in the fields of architecture and landscape architecture) and financial capacity, the contracting authority will select three teams for participation in the design competition. The main focus in this selection will be on the relevance of the reference projects submitted.

The participants will be selected on the basis of the information provided in order to ensure optimum competition.

Engineering services are not part of this invitation to apply for prequalification. The teams that prequalify for participation in the competition are assumed to engage subconsultants with the engineering skills required for preparing the competition scheme. Once the teams to participate in the competition have been selected, the competition promoter will provide further information about the requirements to be met by participating engineers. A lead consultancy agreement is expected to be signed in that connection.

In addition, selected teams may add relevant subconsultants to their teams later in the competition process if such addition is deemed relevant. Such subconsultants must be approved by the client.

FURTHER INFORMATION ABOUT THE COMPETITION

CLIENT

Realdania
Lars Autrup, Head of Projects
Jarmers Plads 2, 1551 Copenhagen V, Denmark
+45 29 69 5212
lau@realdania.dk

COMPETITION SECRETARY

Arkitektkonkurrencerdk ApS
Anne-Mette Bølling, Chief Competition Adviser
Hyldegårdsvej 7, 2920 Charlottenlund, Denmark
+45 2424 7049
amb@arkitektkonkurrencerdk.dk

CLIENT'S ADVISER

Rambøll
Lars Peder Pedersen, Senior Project Director
Olof Palmes Allé 22, 8200 Aarhus, Denmark
+45 5161 7773
lpp@ramboll.dk

ASSESSMENT PANEL

The assessment panel consists of members of the Government of Greenland, Qaasuitsup Municipality and Realdania plus three independent design professionals: an architect, an engineer and a landscape architect. Advisers and experts will be involved as needed.

COSTS

Total construction costs (CAPEX) including feasibility studies, consultants' fees, etc are estimated at DKK 108 million exclusive of VAT.

FEE

The fee is EUR 50,000 exclusive of VAT for each participating team that submits a compliant competition entry by the deadline stated. The two or three teams invited to participate in the negotiated procedure will receive an additional fee of EUR 50,000 exclusive of VAT. All necessary travel expenses will be reimbursed on the basis of an approved budget.

LANGUAGE

The competition language is English. This invitation is issued in English only.

CRITERIA FOR ASSESSMENT OF ENTRIES

Entries will in no order of priority be assessed on their overall ability to

- optimally realise the overall vision of presenting and interpreting the unique icefjord and its natural surroundings
- create a unique icefjord centre that is worth a journey in its own right
- create a building that is sustainable, buildable and adapted to the harsh, dramatic nature of the site
- comply with the budget earmarked for the project and with the time schedule anticipated.

THE PROCESS

It is anticipated that up to three winners of the design competition will be selected, and the competition promoters are expected to invite these teams to participate in a subsequent negotiated procedure. Individual negotiations will be conducted with each winning team, and the process will involve negotiation meetings and intermediary submissions of adjusted competition entries.

The design competition is currently scheduled for October 2015 to mid-January 2016. Once the entries have been assessed, negotiations are expected to take place in the period from mid-March 2016 to mid-May 2016.

A mandatory site visit to Ilulissat in Greenland will be arranged for four weekdays in the week beginning 19 October 2015. Two representatives of each team are expected to participate. Selected teams will receive further details about the visit.

The announcement of the name of the final winner is scheduled for June 2016.

Realdania is expected to enter into a lead consultancy agreement with the entrant that submitted the most economically advantageous tender in the competition. The agreement will be based on the principles set out in the General Conditions for Consulting Services (ABR89), and the services to be provided will in all essentials be described in accordance with the Service Descriptions for Building and Planning issued by the Danish Association of Architectural Firms (Danske ARK) and the Danish Association of Consulting Engineers (FRI).

ANTICIPATED TIME SCHEDULE

Site visit to Ilulissat	October 2015
Submission of competition entries, Stage 1	January 2016
Selection of up to three winning teams	March 2016
Submission of competition entries, Stage 2	May 2016
Announcement of the final winner	June 2016

QUERIES

Questions concerning this contest notice may be emailed in English to amb@arkitektkonkurrencerdk.dk.

The deadline for the first query round is 24 July 2015. We expect to provide answers to the questions within about six calendar days.

The last deadline for submission of queries is 13 August 2015. We expect to provide answers to the questions within about six calendar days. Questions and answers will be available at <http://arkitektkonkurrencerdk.dk/index.php?id=32>

MISCELLANEOUS

- Realdania is the client and contracting party.
- If the project is suspended before an agreement is signed with the winning entrant or if the winning entrant is not entrusted with the assignment within two years of the announcement of the competition result, compensation in the amount of EUR 50,000 exclusive of VAT will be paid to the winning entrant. If the winning entrant is subsequently entrusted with the assignment, the compensation amount will be considered part-payment of the consultancy fee.
- The prequalified teams will be required to submit a service certificate from the Danish Business Authority (or a similar certificate from an equivalent body) when submitting their competition entries.

SUPPLEMENTARY MATERIAL

The following material can be downloaded at <http://arkitektkonkurrencerdk.dk/index.php?id=31>:

Annex 1: Contest notice

Annex 2: Prospectus

Annex 3: Report

ABOUT REALDANIA

Realdania is a private philanthropic association that supports projects in the built environment: cities, buildings and built heritage. Realdania works to create quality of life for everyone through the built environment. Read more at www.realdania.dk